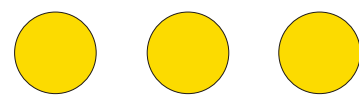


Beiter HIT-MISS



ARE YOU LOOKING FOR: A GAME? A CHALLENGE? A DUEL?

The Beiter Hit-Miss System is a completely new concept in archery. Developed by Werner Beiter over 15 years, it offers the archer a different type of aiming, shooting and scoring compared to existing systems... And it is easier for spectators to understand.

The System consists of a foam target, incorporating yellow "Hit"-discs, which are plastic inserts available in different sizes. You either HIT it or MISS it, 1 or 0!... it is visible and most times,... also audible! Different modules are available, with different sized Inserts, to allow for different levels or archer skill or bow type, e.g. Recurve or Compound

The Hit-Miss Target measures 290x290mm and is made out of black PE-foam containing six holes for two different Hit-Miss Inserts (e.g. 3xØ60mm & 3x40mm for Recurve or 3xØ40mm & 3x20mm for Compound).

The Hit-Miss Inserts are made out of yellow plastic and are fitting the corresponding holes in the black Hit-Miss Target. The Hit-Miss Target must be fixed through the holes provided to a foam boss, using the four TOX-screws and the blue Beiter Screw Tool included in the kit. The Beiter Screw Tool can be used like a bit in a cordless screwdriver or with a 5/32" or SW4 Hex Wrench.

For training purposes you can also use the Björn paper target faces included in the kit.

Product code numbers

HM6040KIT	Beiter Hit-Miss, KIT, 3x60/3x40mm, incl. Inserts, Screws, Target-Pins and -Faces
HM4020KIT	Beiter Hit-Miss, KIT, 3x40/3x20mm, incl. Inserts, Screws, Target-Pins and -Faces
HM340P	Beiter Hit-Miss Paper Target 3x40mm
HM360P	Beiter Hit-Miss Paper Target 3x60mm

Replacement parts code numbers:

HM4020	Beiter Hit-Miss, Target 3x40/3x20mm, 290x290x50mm
HM6040	Beiter Hit-Miss, Target 3x60/3x40mm, 290x290x50mm
HMI206	Beiter Hit-Miss, Insert 20mm, 6pcs.
HMI406	Beiter Hit-Miss, Insert 40mm, 6pcs.
HMI606	Beiter Hit-Miss, Insert 60mm, 6pcs.
HMDB1204	Beiter Hit-Miss, 4 Screws & Tool

HM6040KIT
Beiter Hit-Miss, KIT,
3x60/3x40cm
incl. 6x60/6x40mm Inserts,
Screws, Target-Pins and -
Faces, packed in a handy
shopping bag.



HM4020KIT
Beiter Hit-Miss, KIT, 3x40/3x20cm
incl. 6x40/6x20mm Inserts,
Screws, Target-Pins and -Faces, packed in a
handy shopping bag.

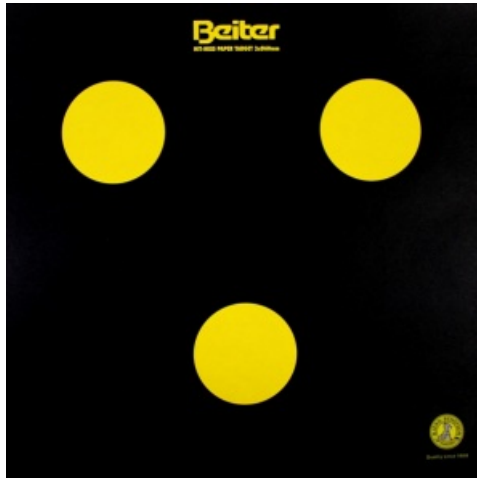


Beiter Hit-Miss spare parts

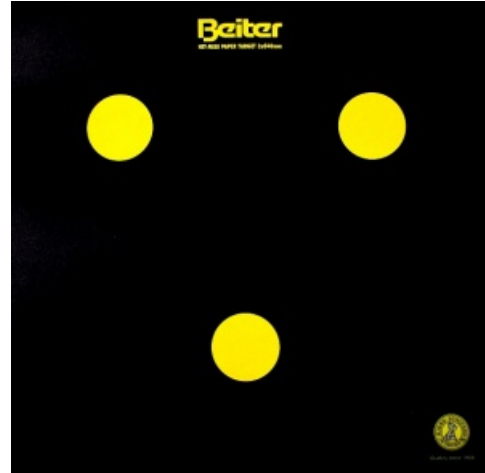
Replacement Foam Targets (no picture)

HM6040 Beiter Hit-Miss, Target 3x60/3x40mm, 290x290x50mm

HM4020 Beiter Hit-Miss, Target 3x40/3x20mm, 290x290x50mm



HM360P
Beiter Hit-Miss Paper Target 3x60mm



HM340P
Beiter Hit-Miss Paper Target 3x40mm



HMI606
Beiter Hit-Miss, Insert 60mm, 6pcs.



HMI206
Beiter Hit-Miss, Insert 20mm, 6pcs.



HMI406
Beiter Hit-Miss, Insert 40mm, 6pcs.

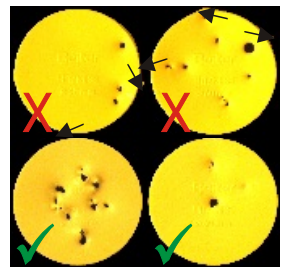


HMDB1204
Beiter Hit-Miss, 4 Screws & Tool

Should Hit-Miss Inserts be changed after every HIT?

Definitely not! You have NOT need to exchange the Insert after each HIT. You only need to change the Insert when it is too damaged or the outer edge of it has been dented. Following pictures show inserts which can still be used (✓) and those which should be replaced (X).

To extract Ø20mm Inserts hit by an arrow, it may be necessary to use a small hook (e.g. a crochet hook or a small hex wrench) Take care not to damage the hole's edge, which could cause the insert not to hold anymore. Therefore DO NOT use your fingers or the tool/hook as a lever.



Beiter Hit-Miss Tournaments can be shot worldwide, organised by local Beiter Hit-Miss Partners. These will be Mixed Team events, with a team consisting of 1 Recurve and 1 Compound archer, regardless of gender or age (equipment according to WA equipment rules).

A tournament can consist out of Elimination Rounds and Finals, as well as a 10-end Qualification Round with Elimination and Finals or just Heads-Up or Duels that can be shot at local partner venues.

More details will follow on www.beiterhitmiss.com